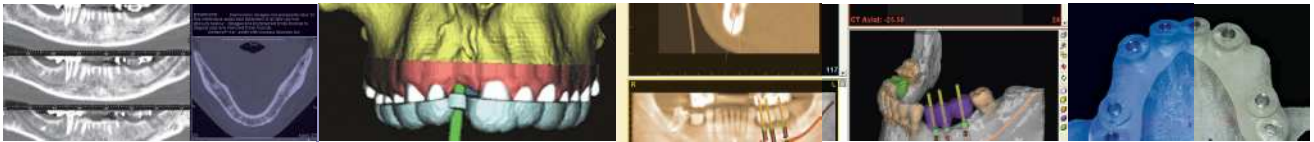


SimPlant[®]Crystal



SimPlant Hands-On Workshop

An introductory course by Barry Chandler, Medical Applications Manager, IDT

SimPlant is the most widely used implant planning software worldwide. It has been developed over 16 years and has grown into the most comprehensive CT implant planning package available.

This course is designed to give you a complete understanding of the use of SimPlant to get the most out of your CT Scans and to order sub-millimeter accurate SurgiGuides.

You will also have the opportunity to test out the surgical guiding systems designed by SimPlant partners Biomet 3i.

This course satisfies the minimum requirements for practical training in the use of imaging software for IR(ME)R Referrers.



www.ctscan.co.uk

WHERE AND WHEN?

The British Dental Association, 64 Wimpole St., London W1G 8YS. Saturday 6 October 2012, 9am-4:30pm. 6 hours CPD to be awarded

REGISTRATION

Prices: £125+VAT per person (£95+VAT for current SimPlant Maintenance customers)

HOW TO BOOK?

Please email courses@ctscan.co.uk to book your place and arrange payment. Telephone: +44 (0) 20 8600 3540

BOOKING FORM

Email: Please email courses@ctscan.co.uk to book your place and arrange payment.

Fax/ Post: Please complete the registration form below and fax it to +44 (0)20 8600 3549, or post it to IDT Dental Products Ltd., Unit GC, 36 Warple Way, London, W3 0RG.

I would like to attend the SimPlant Hands-on Workshop at The British Dental Association, 64 Wimpole Street, London W1G 8YS on Saturday 6 October 2012, 9am-4:30pm.

Last Name

First Name

Practice Address

City

Post Code

Phone

Fax

Email

Payment (✓): £125 + VAT = £150 £95 + VAT = £114 (SimPlant Maintenance customers)

Cheque

Please make cheques payable to IDT Dental Products Ltd.

Credit Card

Name (as it appears on the card)

Credit Card No.

Exp. Date

IDT Dental Products Ltd. Unit GC, 36 Warple Way, London, W3 0RG.

Sponsored by

